

PR Antibody
Rabbit Monoclonal Antibody (Mab)
Catalog # AD80246**Specification**

PR Antibody - Product info

Application	IHC
Primary Accession	P06401
Reactivity	Human
Host	Rabbit
Clonality	Monoclonal
Calculated MW	98981

PR Antibody - Additional info

Gene ID	5241
Gene Name	PGR
Other Names	
Progesterone receptor, PR, Nuclear receptor subfamily 3 group C member 3, PGR, NR3C3	

Dilution

IHC~~Ready-to-use

Storage

Maintain refrigerated at 2-8°C

Precautions**PR Antibody is for research use only and not for use in diagnostic or therapeutic procedures.****PR Antibody - Protein Information****Name** PGR**Synonyms****Function****NR3C3****The steroid hormones and their receptors are involved in the regulation of eukaryotic gene expression and affect cellular proliferation and differentiation in target tissues. Depending on the isoform, progesterone receptor functions as transcriptional activator or repressor.****Cellular Location****Nucleus. Cytoplasm. Note=Nucleoplasmic shuttling is both hormone- and cell cycle-dependent. On hormone stimulation, retained in the cytoplasm in the G(1) and G(2)/M phases Isoform 4: Mitochondrion outer membrane****Tissue Location****In reproductive tissues the expression of**

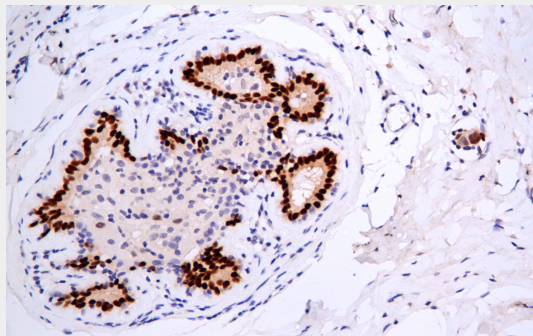
isoform A and isoform B varies as a consequence of developmental and hormonal status. Isoform A and isoform B are expressed in comparable levels in uterine glandular epithelium during the proliferative phase of the menstrual cycle. Expression of isoform B but not of isoform A persists in the glands during mid-secretory phase. In the stroma, isoform A is the predominant form throughout the cycle. Heterogeneous isoform expression between the glands of the endometrium basalis and functionalis is implying region- specific responses to hormonal stimuli

PR Antibody - Protocols

Provided below are standard protocols that you may find useful for product applications.

- [Western Blot](#)
- [Blocking Peptides](#)
- [Dot Blot](#)
- [Immunohistochemistry](#)
- [Immunofluorescence](#)
- [Immunoprecipitation](#)
- [Flow Cytometry](#)
- [Cell Culture](#)

PR Antibody - Images



Immunohistochemical analysis of paraffin-embedded breast cancer tissue using AD80246 performed on the Abcarta® FAIP-30 Fully automated IHC platform. Tissue was fixed with formaldehyde at room temperature, antigen retrieval was by heat mediation with a Citrate buffer (pH6.0). Samples were incubated with primary antibody (Ready-to-use) for 15 min at room temperature. AmpSee™ Detection Systems [Abcepta:AR005] was used as the secondary antibody.